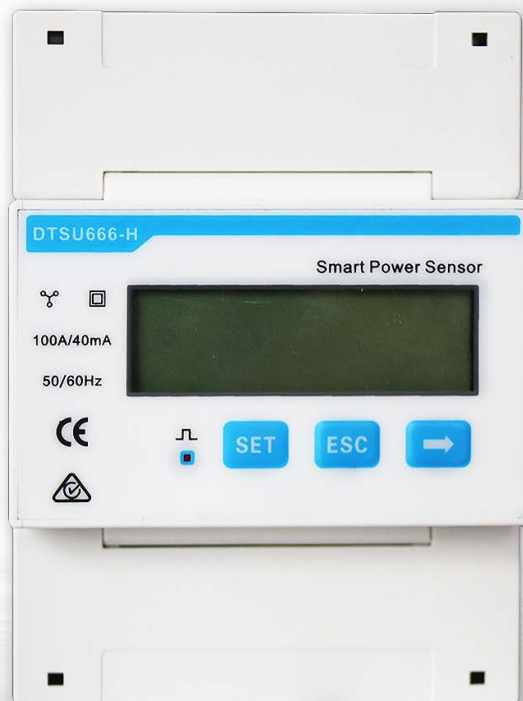


# SMART POWER SENSOR

Model: DTSU666-H 100A



**Accurate**  
Class | measurement  
accuracy




**Simple & Easy**  
LCD display, easy to set  
and check



**Energy Efficient**  
Overall power  
consumption  $\leq 1.5$  W

## Smart Power Sensor Technical Specifications

Technical Specification	DTSU666-H
Manufacturer	CHINT
General Specification	
Dimensions (H x W x D)	100 mm x 72 mm x 65.5 mm (3.9 in. x 2.8 in. x 2.6 in.)
Mounting type	DIN35 Rail
Weight (including cables)	1.5 kg (3.3 lb)
Power Supply	
Power grid type	3P3W/3P4W
Input voltage (phase voltage)	176 V AC–288 V AC
Power consumption	≤ 1 W
Measurement Range	
Line voltage	304 V AC–499 V AC
Phase voltage	176 V AC–288 V AC
Current	0–100 A
Measurement Accuracy	
Current/Voltage	±0.5%
Power/Energy	±1%
Frequency	±0.01 Hz
Communication	
Interface	RS485
Baud rate	9,600 bps
Communication protocol	Modbus-RTU
Environment	
Operating temperature range	–25°C to +60°C
Storage temperature range	–40°C to +70°C
Operating humidity	5% RH–95% RH (non-condensing)
Others	
Accessories	RS485 Cable (10 m / 33 ft.)
	3 CT 100 A / 40 mA (5 m / 16.4 ft.) 

Disclaimer: The preceding values are measured by an internal laboratory of Huawei in a specific environment. The actual values may vary with products, software versions, usage conditions, and environmental factors.